

Topic: Culture & Society: Race

B.A HONOURS IN GEOGRAPHY: 2ND SEMESTER

Mr. Sahidul Karim

Assistant Professor, Department of Geography
Acharya Brojendra Nath Seal College, Cooch Behar,
West Bengal - 736101

Concept of Race

- ❖ **Human:** 'Homo sapiens sapiens'
- ❖ Race is a biological concept; not a cultural one. It denotes genetically divergent human populations that can be marked by common phenotypes.
- ❖ The term 'Race' is applied to a physically distinctive groups of people, on the basis of their difference from other groups in skin colour, head shape, hair type and physique.

Misconception about Race

Indian

Pakistani

Germans

Dravidian

- ❖ National, religious, cultural and geographically inhabited human groups should not be confused with racial groups.

*White
American*

*Black
American*

- ❖ Racial 'superiority' or 'inferiority'. The scientists and anthropologists have never accepted the misconception related to superiority and inferiority of races.

Formation of Races

Mutation

Natural Selection

Genetic Drift

Migration

Isolation

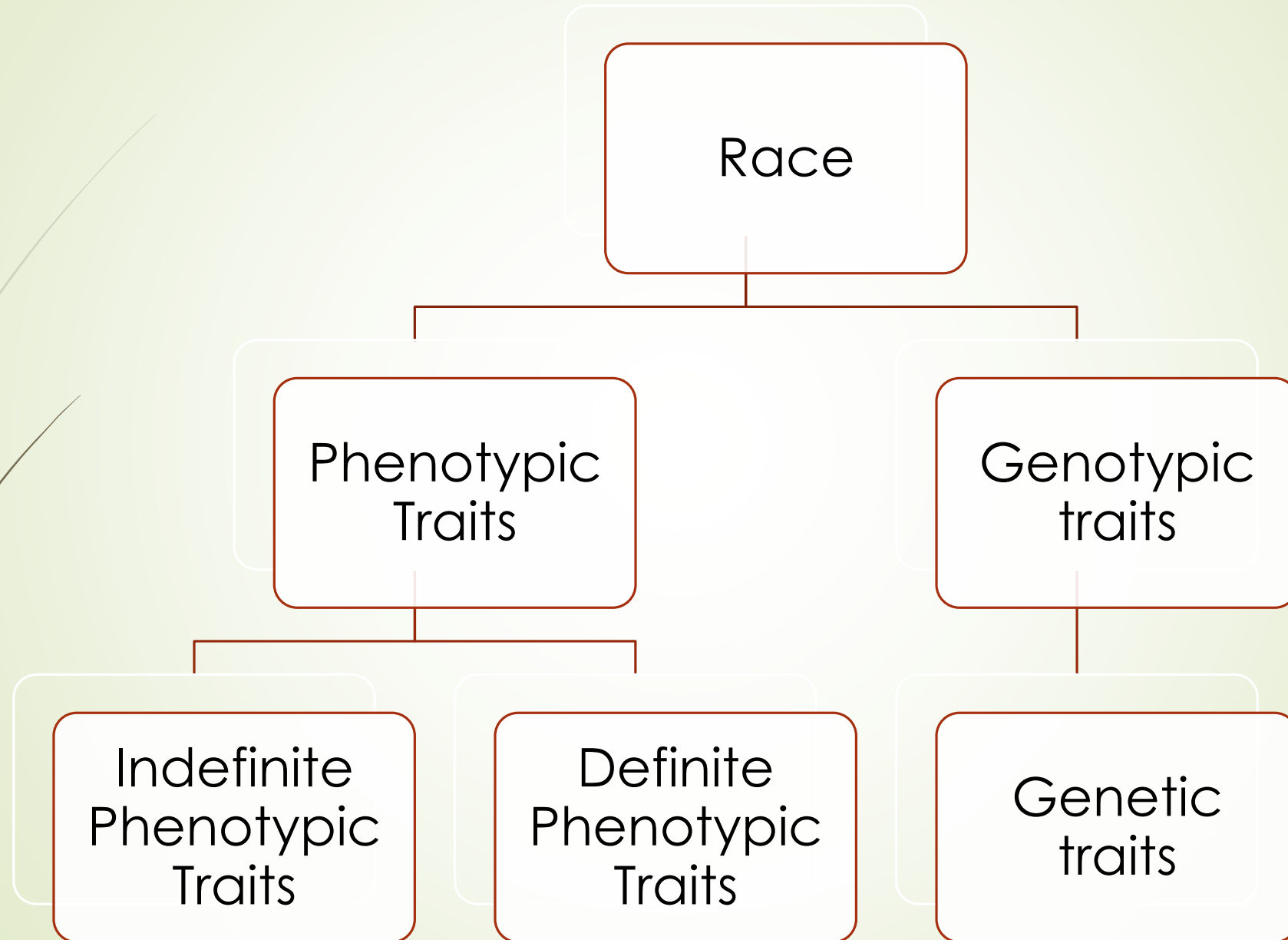
Hybridization

Sexual Selection

Social Selection



Basis of Racial Classification



Phenotypic Traits

☐ Indefinite Phenotypic Traits

- **Skin Colour:** White skinned people or Leucoderms, e.g. Caucasian
Yellow skinned people or Xanthoderms, e.g. Mongolian
Black skinned people or Melanoderms, e.g., Negroes
- **Hair**
- **Eye**
- **Nose**
- **Lips**
- **Face**
- **Ear**

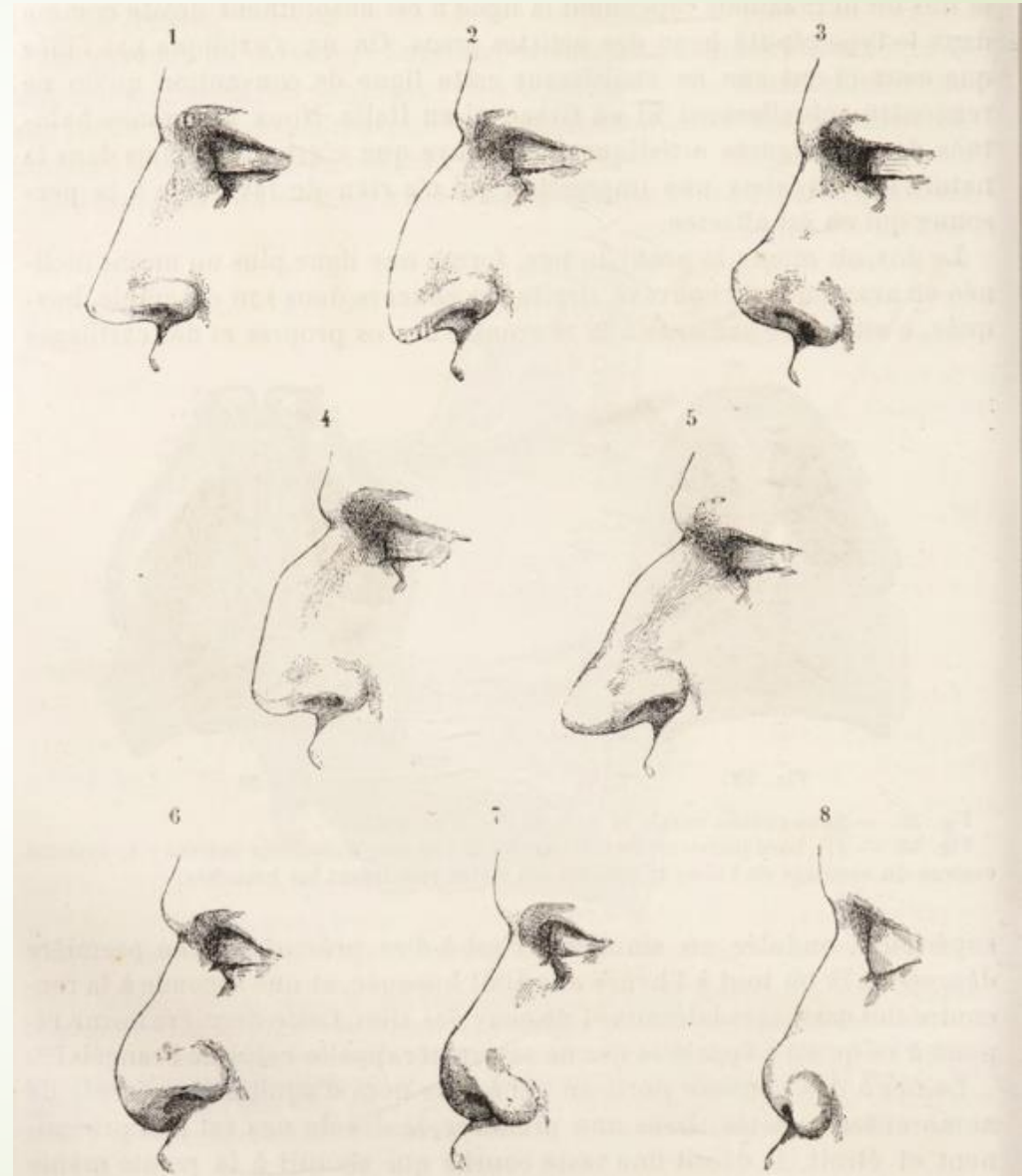
Phenotypic Traits

□ Indefinite Phenotypic Traits



Phenotypic Traits

□ Indefinite Phenotypic Traits



Phenotypic Traits

□ Definite Phenotypic Traits

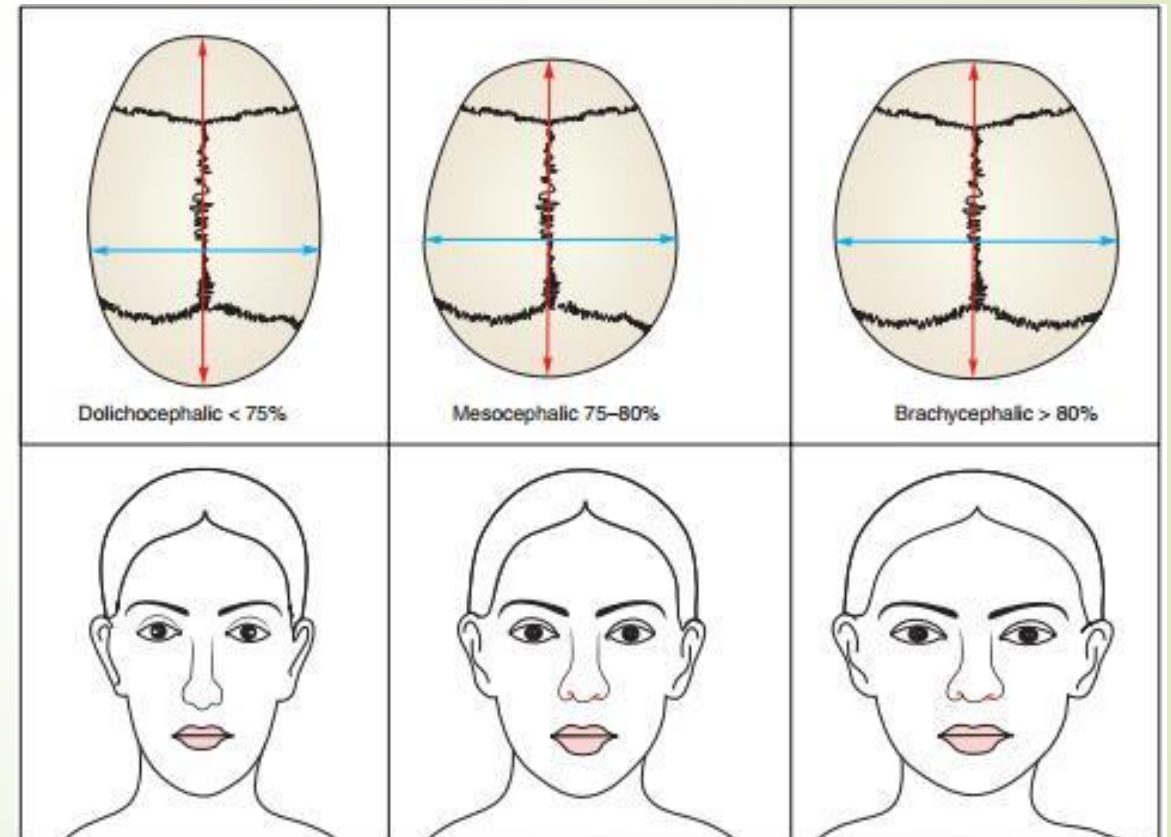
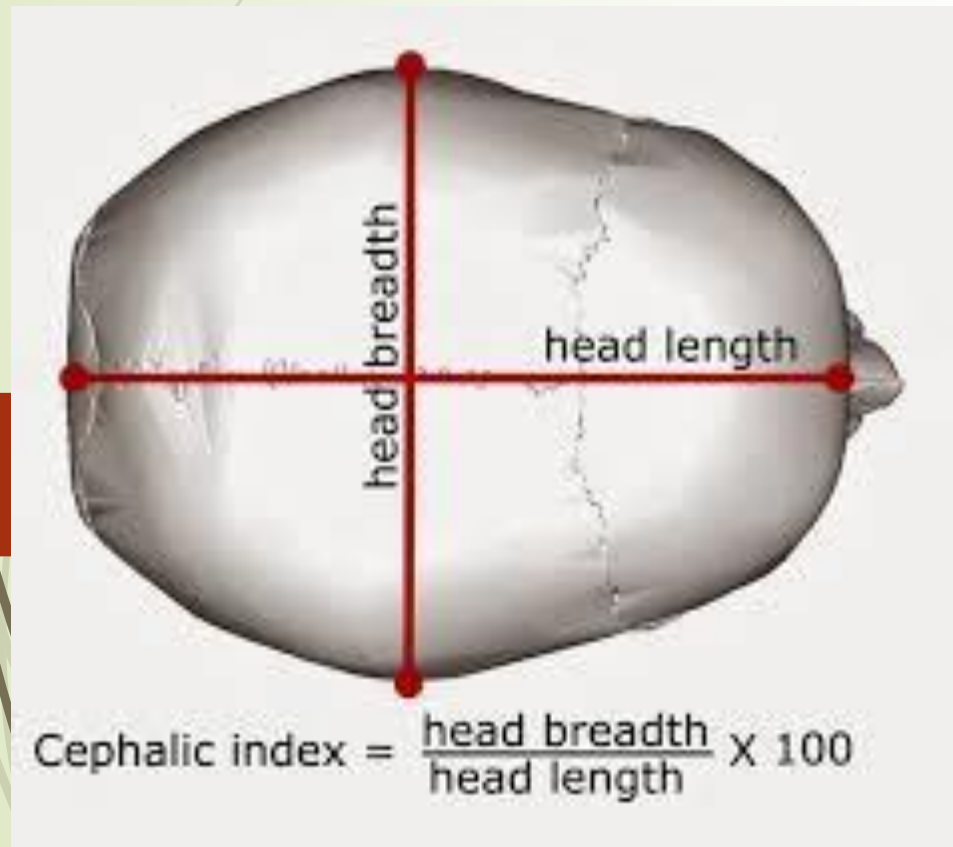
- **Stature:** Martin has classified stature in the following manner

Pygmy	Upto	129.0 cms.
Very short	130.0	149.9 cms.
Short	150.0	159.9 cms.
Below medium	160.0	163.9 cms.
Medium	164.0	166.9 cms.
Above Medium	167.0	169.9 cms.
Tall	170.0	179.9 cms.
Very tall	180.0	199.9 cms.
Giant	200.0	and above

Phenotypic Traits

□ Definite Phenotypic Traits

➤ Head Form: Cephalic Index



Phenotypic Traits

□ Definite Phenotypic Traits

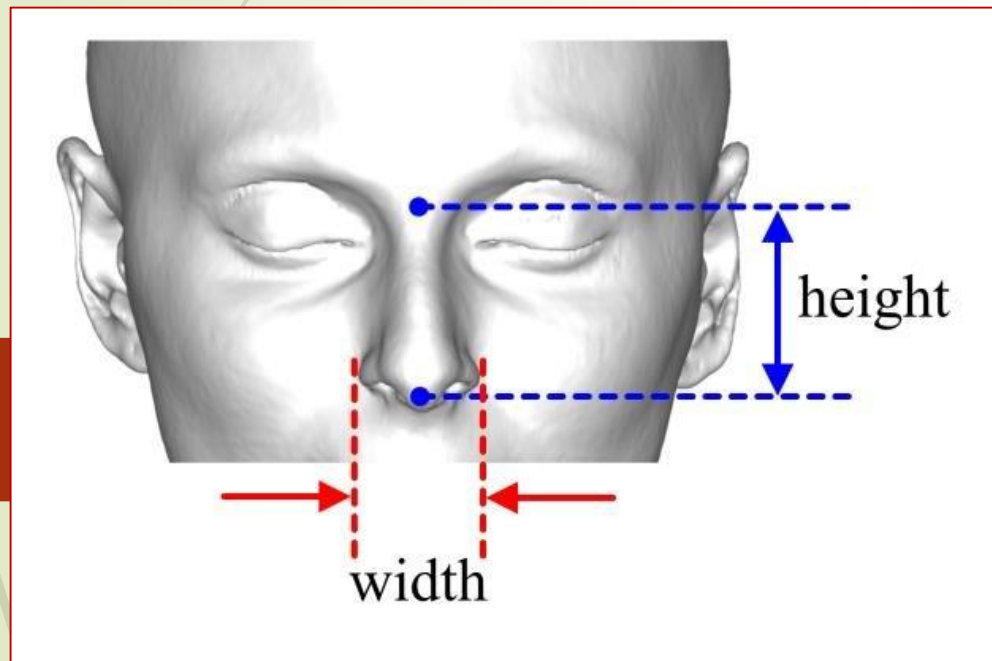
➤ Head Form: Cephalic Index

Head shape	Cephalic index (CI)
Dolichocephalic	$70 < 74.9$
Mesocephalic	$75 < CI < 79.9$
Brachycephalic	$80 < CI < 84.9$
Hyperbrachycephalic	$85 CI < 89.9$ and $CI < 89.9$

Phenotypic Traits

□ Definite Phenotypic Traits

➤ Nasal Form: Nasal Index



Phenotypic Traits

□ Definite Phenotypic Traits

➤ Nasal Form: Nasal Index

Categories	Nasal shape	Nasal index
Hyperleptorrhine	Very Narrow	40 – 54.9
Leptorrhine,	Long and Narrow	55 – 69.9
Mesorrhine	Moderate shape	70 – 84.9
Platyrrhine	Broad and Short	85 – 99.9
Hyperplatyrrhine	Very broad/Wide	≥ 100

Phenotypic Traits

□ Definite Phenotypic Traits

➤ Face Form: Facial Index

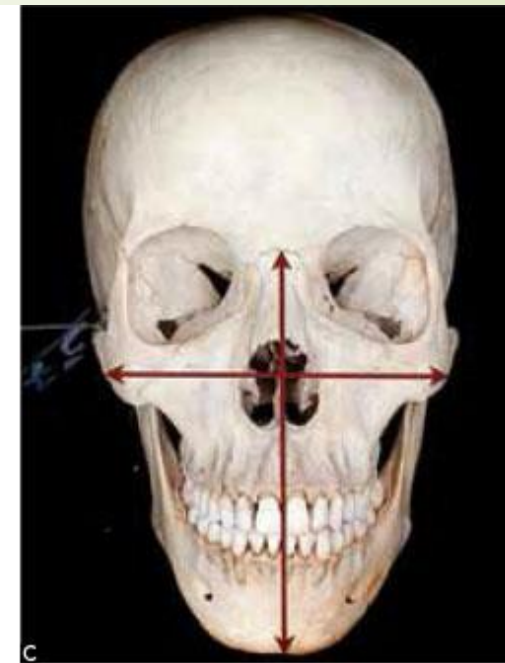
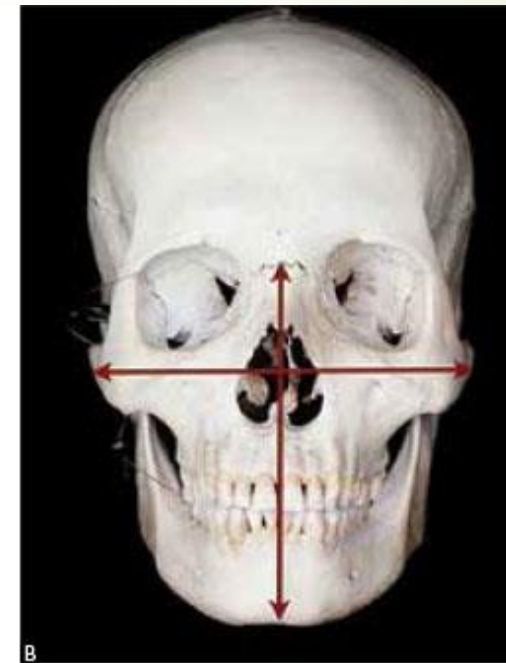
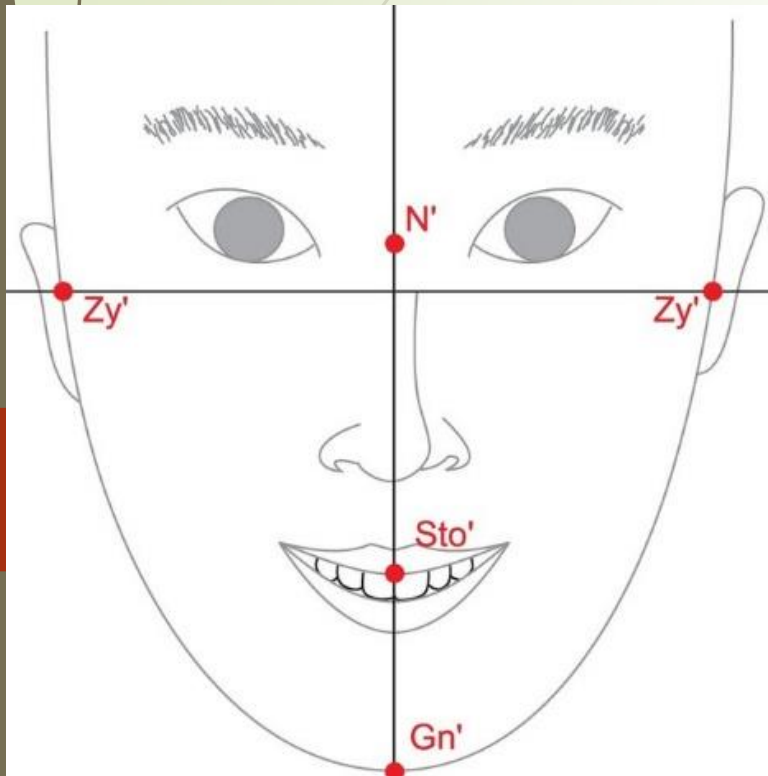


Figure 2 - Facial index: Calculated as the ratio between the morphological face height (N-Gn) and bizygomatic width (Zyr-Zyl). In A, euryprosopic face; in B, mesoprosopic face, and in C, leptoprosopic face.

Phenotypic Traits

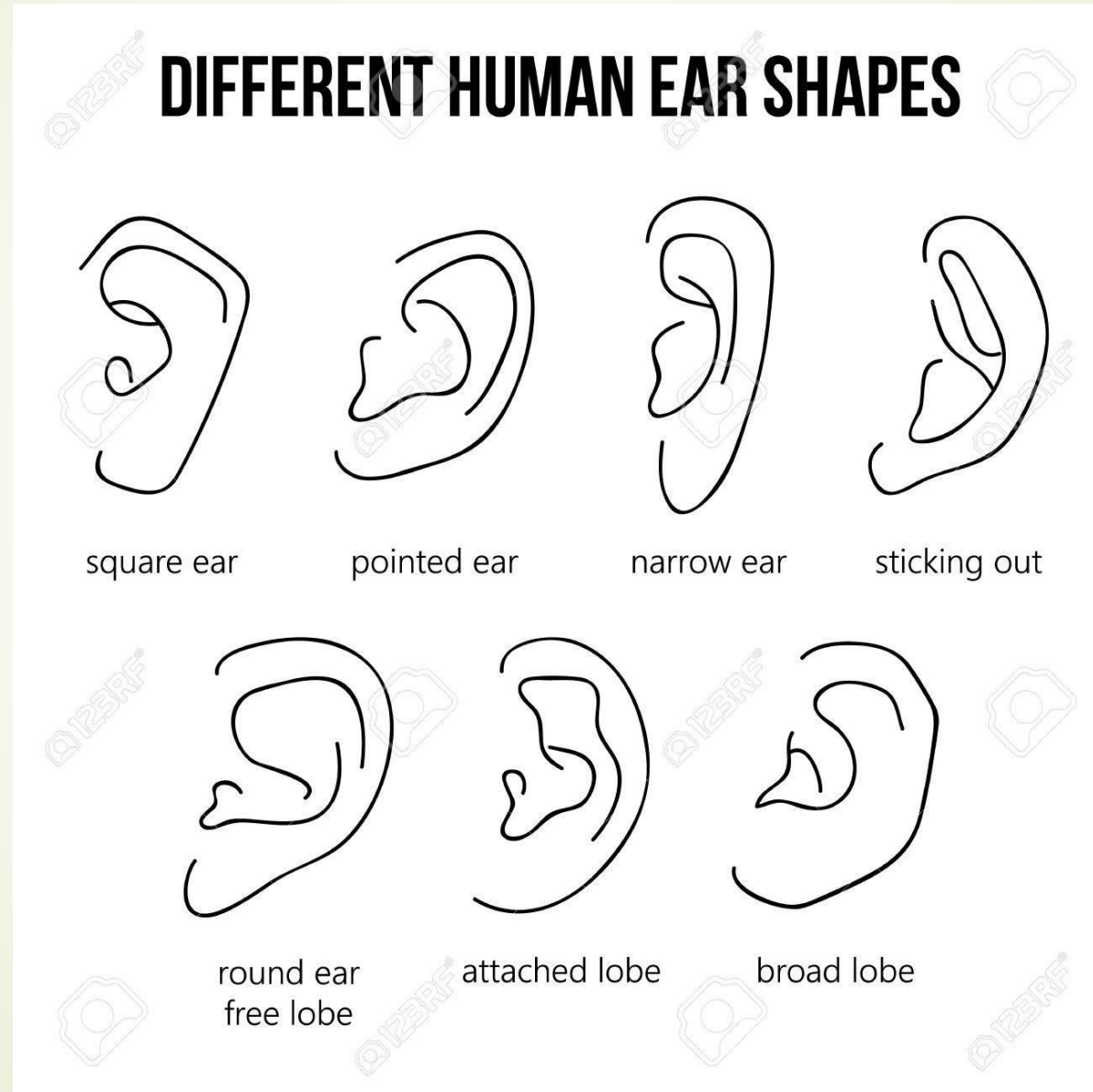
□ Definite Phenotypic Traits

➤ Face Form: Facial Index

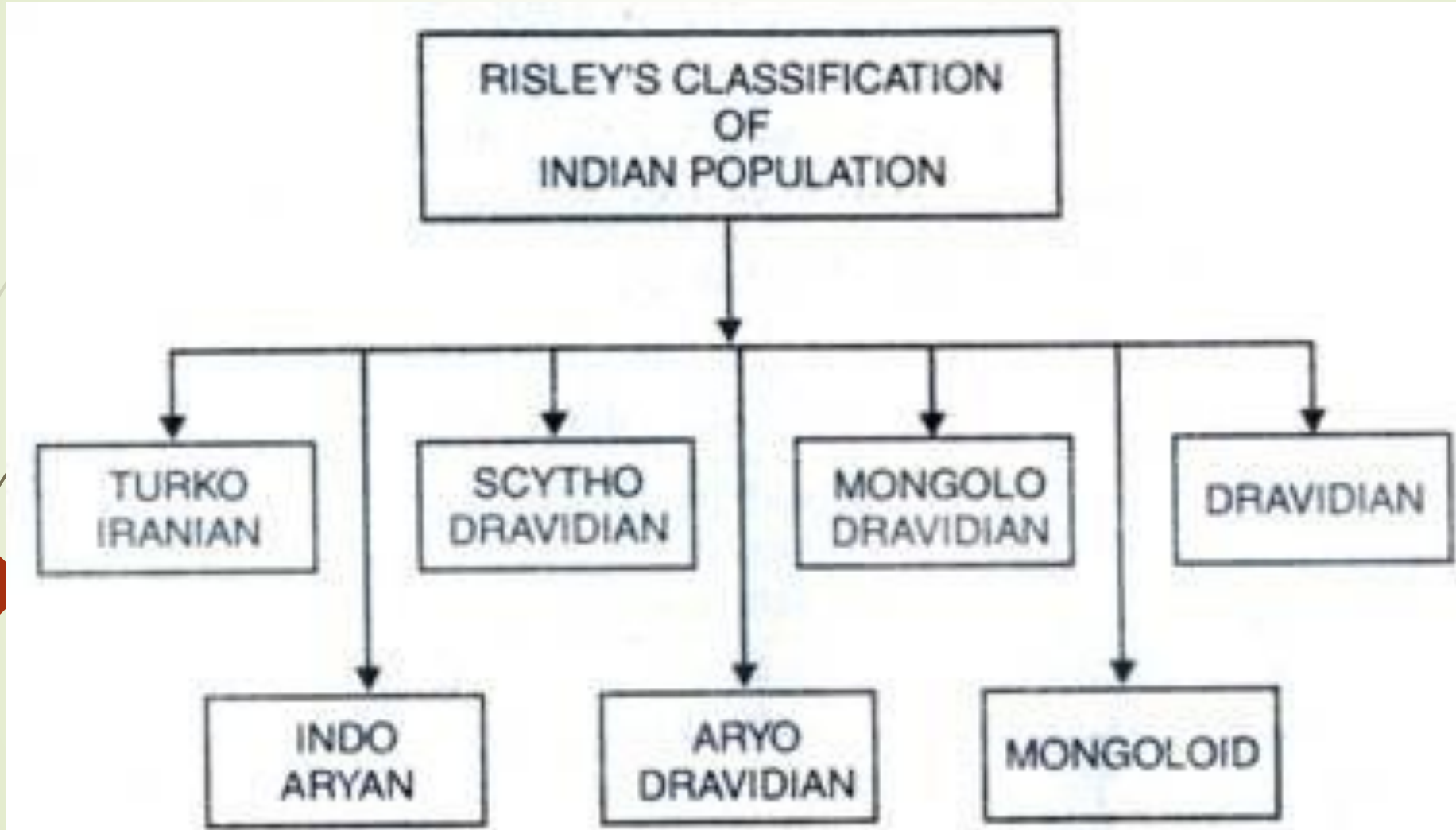
Hypereuryprosopic	$x - 79.9$
Euryprosopic	80.0 - 84.9
Mesoprosopic	85.0 - 89.9
Leptoprosopic	90.0 - 94.9
Hyperleptoprosopic	95.0 - x
Facial index	$\frac{\text{Morphological facial height (N-Gn)} \times 100}{\text{Bizygomatic width (Zyr - Zyl)}}$

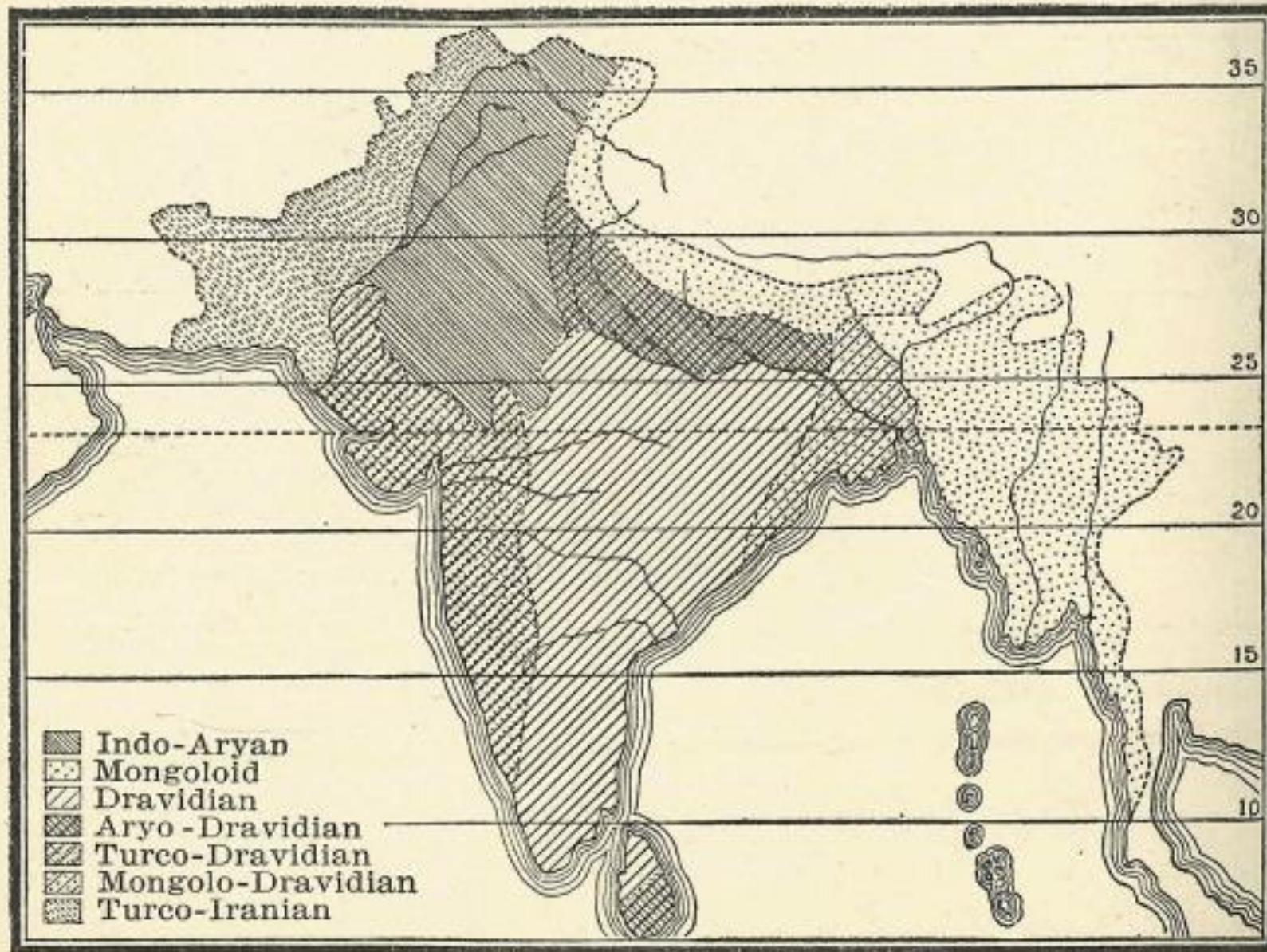
☐ Definite Phenotypic Traits

➤ Ear Form:



Racial Classification





ETHNOGRAPHICAL MAP OF INDIA FROM THE INDIAN CENSUS OF 1901.

